

OPERATION – INSTALLATION MANUAL

TPI Corporation
P.O. Box 4973
Johnson City, TN 37602
www.tpicorp.com

INFRARED HEATER

MODEL NO.:

PCH-48C

WARNING! DO NOT ATTEMPT TO INSTALL, OPERATE, OR SERVICE THIS PRODUCT BEFORE READING ALL INSTRUCTIONS CAREFULLY. FAILURE TO COMPLY WITH THESE INSTRUCTIONS COULD RESULT IN FIRE, PERSONAL INJURY AND/OR PROPERTY DAMAGE! RETAIN INSTRUCTIONS FOR FUTURE REFERENCE.

DESCRIPTION

The PCH-48C Heaters are designed to provide efficient spot heating for construction sites, farms, warehouses, garages, truck docks, paint and plaster drying, etc. **NOT FOR INDOOR RESIDENTIAL USE.** Heaters are equipped with steel grid type protective guards. A toggle switches is supplied for turning the heater on and off. A tip-over switch is also supplied to de-energize the element should the heater be turned over.

SPECIFICATIONS

Heat source.....5/8" Dia. Quartz Tube
Element Life (Avg.).....5000 Hrs.
Wire Guard.....0.125" Dia. Steel Wire
Housing.....20 gauge Powder Coated Steel

PCH-48C

Powercord.....15', 14/3 Grounded Type w/ Nema 5-20P Plug
Power Requirements.....120V

Element Wattage.....1500

IMPORTANT SAFETY INFORMATION

Read all instructions before using this heater.

1. Make certain that the power source conforms to the electrical requirements of the heater
2. Unplug power cord before installing or servicing.

WARNING: DO NOT DEPEND UPON A THERMOSTAT OR OTHER SWITCH AS THE SOLE MEANS OF DISCONNECTING POWER WHEN INSTALLING OR SERVICING THE HEATER. ALWAYS UNPLUG THE HEATER. FAILURE TO DO SO COULD RESULT IN FATAL ELECTRIC SHOCK.

3. **NEVER** leave the heater unattended for extended periods, while it is in operation.
4. Power cord is equipped with a three-wire bonding (grounding) type plug that must be inserted into a matching receptacle. Under no circumstances should the bonding prong be cut off plug. Where a two-prong wall receptacle is encountered, it must be replaced with a properly bonded (grounded) three-prong receptacle installed in accordance with the National Electric Code (NEC) and all applicable local codes and ordinances. This work must be done only by a qualified electrician, using copper wire only. **WARNING: USE OF A THREE-PRONG TO TWO-PRONG ADAPTER IS NOT RECOMMENDED. Improper connection may create the risk of electrocution. Use of such adapters is not permitted in Canada.**

5. All wiring should be performed by a qualified electrician.

6. This heater can be used for 120V, single phase power. These units are supplied with 3-wire cordsets for portability. **To reduce the risk of electric shock, the heater must be securely and adequately bonded (grounded)!** This can be accomplished by either: 1) Inserting the plug directly into a properly installed and bonded 3-prong bonding type receptacle. 2) Using a separate bonding wire connected to the bare metal of the heater. 3) Using other suitable means. The green (or green and yellow) conductor in the cord is the bonding (grounding) wire.

WARNING: Never connect the green (or green and yellow) wire to a live terminal!

7. Where possible, avoid the use of extension cords. If they must be used, minimize the risk of overheating by ensuring that they are Listed and are of the proper gauge and length, and that they have 3-prong bonding (grounding) type plugs. Use 3-pole receptacles that accept the 3-prong plugs. Never use a single extension cord to operate more than one heater.
8. Do not insert fingers or foreign objects into the heater. Do not block or tamper with the heater while it is in operation. Do not touch heater while it is in operation or just after it has been turned off, as some parts may be hot enough to cause injury.

IMPORTANT SAFETY

9. This heater is intended for general heating applications **ONLY**. It must **NOT** be used in potentially dangerous locations such as flammable, explosive, chemical-laden or wet atmospheres.
10. Be sure all electrical parts are enclosed to prevent personal injury.
11. **CAUTION:** Check branch voltage. Heaters should be operated at voltages no higher than the heating elements and the heater are designed for. (Lower voltages, however, pose no problem other than a loss of wattage).
12. This heater is **NOT** waterproof and is not intended to be used in saunas, showers, or in potentially wet locations.

ASSEMBLY

CAUTION: DISCONNECT POWER BEFORE INSTALLING OR REPLACING QUARTZ TUBES. THESE TUBES CAN AND SHOULD BE INSTALLED PRIOR TO MOUNTING HEATER. These heaters should always be mounted so that the quartz tubes are horizontal, or tube burnout will occur.

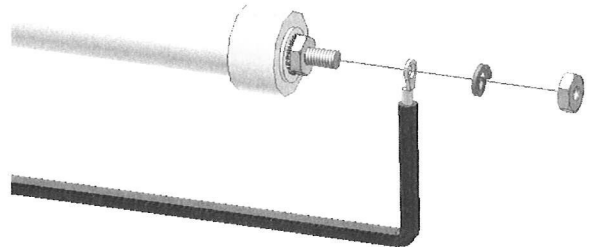
Be sure that the power source conforms to the heater requirements. **Make sure the quartz tube conforms to your power source requirements.**

INSTALLATION OF HEATING ELEMENTS:

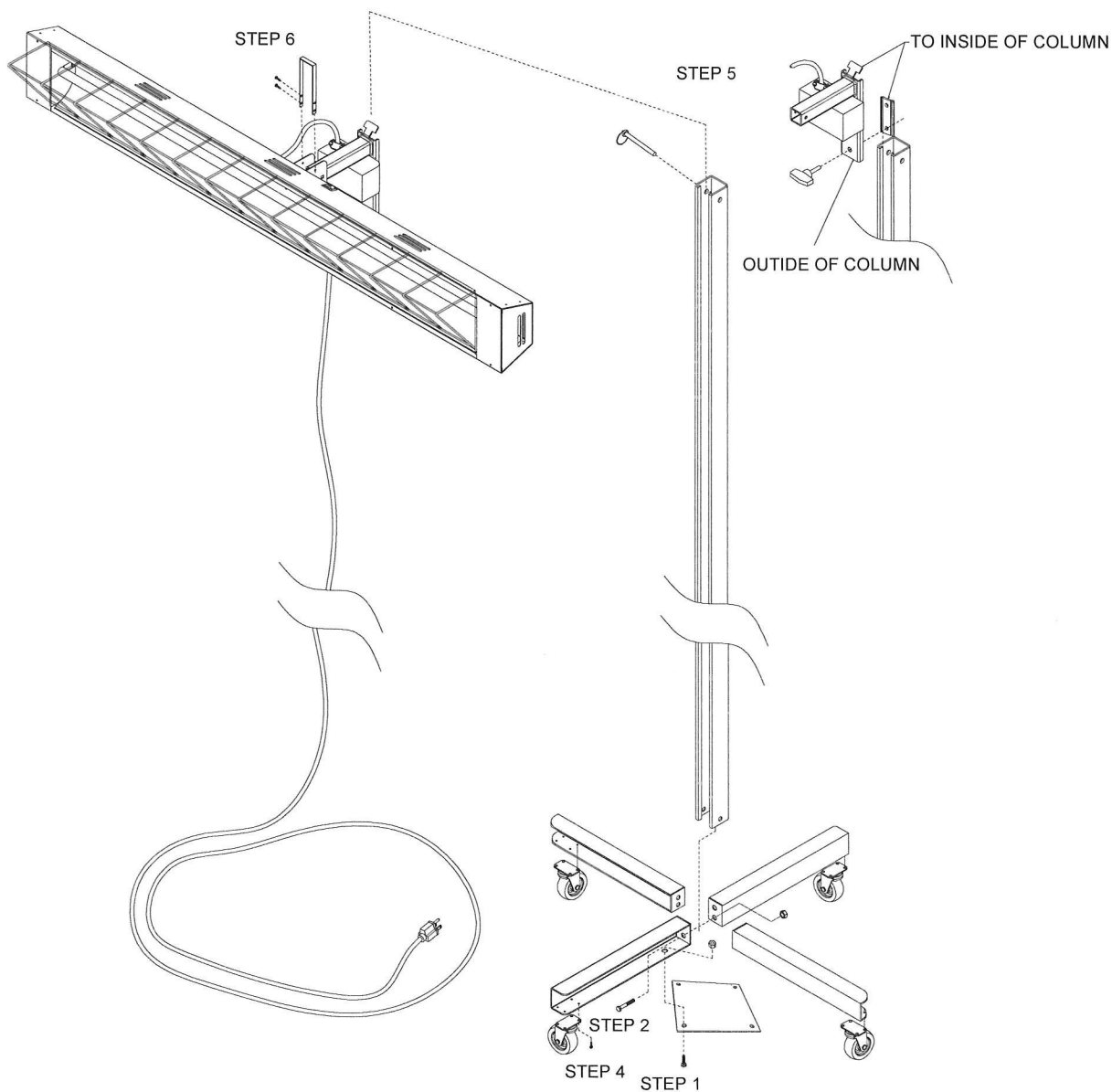
The heater is equipped with two hi-temperature 14 gauge silicone lead wires and a ground termination. Make sure power source conforms to the heater requirements. Use only Fostoria quartz tubes.

1. Remove the sheet metal screws that hold fixture end caps and lamp guard in place.
2. Insert quartz tube in the "L"-shaped slots in heater housing.
3. On each end of the quartz tube, place (1) lead wire ring terminal, (1) split washer and (1) hex nut on the threaded stud and **tighten securely** (see image below). Split washers and hex nuts are provided in hardware package.
4. Replace one end cap and insert one end of lamp guard, place opposite end of lamp guard into the remaining end cap and secure with screws.

NOTE – Use a second wrench to hold the inner hex nut in place while tightening the outer hex nut. Failure to securely tighten this connection will cause the element to fail prematurely.



STAND ASSEMBLY



1. Mount the (4) legs to support plate. Do not completely tighten bolts at this time.
2. Place column inside of legs and secure with bolts. One bolt in bottom hole of opposing legs and one bolt in top of second set of opposing legs .
3. Tighten support plate bolts.
4. Secure castors as shown.
5. Assemble heater to column and insert stop pin as shown.
6. Install adjustment handle as shown.

OPERATING INSTRUCTIONS

1. Plug heater into a bonded (grounded) receptacle with a power source conforming to the heater requirements. Ensure that total current does not exceed circuit rating.
2. Adjust heater height by sliding adjustment arm up or down the upright strut, tighten handle.
3. Adjust angle of heater to desired position and tighten handle.
4. To energize heater, flip the toggle switch on housing.

MAINTENANCE

WARNING: DISCONNECT HEATER FROM POWER SUPPLY BEFORE SERVICING OR INSPECTING FOR ANY REASON. FAILURE TO DO SO COULD RESULT IN ELECTRICAL SHOCK OR INJURY.

Quartz tubes and reflectors should be kept free from fingerprints, grease and foreign matter. Periodic washing will assure the most efficient heater operation. Periodically wipe reflectors and quartz tubes with a clean, soft cloth; also periodically wipe the tubes with alcohol and a clean, soft cloth. Be sure to allow tubes to fully cool down prior to cleaning or performing maintenance.

Replace or repair damaged or worn cords immediately.