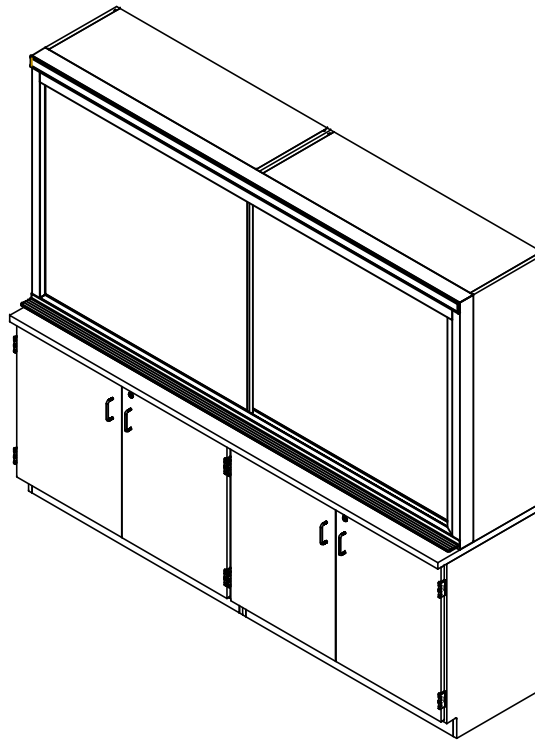


# LEARNING PLUS WALL

LW-8 (OAK OR MAPLE)  
ASSEMBLY INSTRUCTIONS



NOTE:

1. MODEL VIEWS MAY NOT REPRESENT EXACT MODEL PURCHASED

DWN BY:	EMK	DWN DATE:	3/4/14
APR BY:		DATE APR:	
APR BY:		DATE APR:	

UNLESS OTHERWISE SPECIFIED  
DIMENSION ARE IN INCHES  
CABINET SQUARENESS  $\pm .0625$   
FRACTIONAL VALUES  $\pm 1/32"$   
- ALL VALUES  $\pm$  OVERALL -



300 South Krueger Street  
Suring, WI 54174  
diversifiedwoodcrafts.com

TITLE:  
LEARNING PLUS WALL  
ASSEMBLY INSTRUCTIONS

A	CREATED ASSEMBLY INSTRUCTIONS	3/4/14	EMK	-
REV.	DESCRIPTION	DATE	NAME	ECN NO.

REVISION LEVEL

THIS DRAWING IS THE SOLE PROPERTY OF  
DIVERSIFIED WOOD CRAFTS. IT MAY NOT  
BE ALTERED OR CHANGED WITHOUT  
PERMISSION

DRAWING NUMBER:

LW-8

SCALE:

NTS

SHEET:

1 OF 5

REVISION:

REV A

## TOOLS REQUIRED

SCREW DRIVER  
CONTACT CEMENT

## ASSEMBLY COMPONENTS

ITEMS INCLUDED	PART #	PART DESCRIPTION	QTY
CABINET ASSEMBLY	N/A	B03 - 35H X 48W X 22D	2
CABINET ASSEMBLY	N/A	G01 - 48H X 48W X 16D	2
TOP	249318F	TOP, PLAM, 1.25X24X96, BLK, FLAT	1
CORNER BASE ASSEMBLY	206513	CORNER, BASE, ASSY, 2CORNER W/ SCREWS	1
RUBBER BASE MOLDING	100283	RUBBER BASE MOLDING (SOLD BY FOOT)	11.29
MARKER BOARD	249162	MARKER BOARD UNIT, 8' X 4'	1
SCREWS - TOP	100597	SCREW, #8X1½" QUAD ROUND WASHER	12

### NOTE:

1.

DWN BY:	EMK	DWN DATE:	3/4/14
APR BY:		DATE APR:	
APR BY:		DATE APR:	

UNLESS OTHERWISE SPECIFIED  
DIMENSION ARE IN INCHES  
CABINET SQUARENESS ± .0625  
FRACTIONAL VALUES ± 1/32"  
- ALL VALUES ± OVERALL -



300 South Krueger Street  
Suring, WI 54174  
diversifiedwoodcrafts.com

TITLE:  
LEARNING PLUS WALL  
TOOLS AND ASSEMBLY COMPONENTS

A	CREATED ASSEMBLY INSTRUCTIONS	3/4/14	EMK	-
REV.	DESCRIPTION	DATE	NAME	ECN NO.

REVISION LEVEL

THIS DRAWING IS THE SOLE PROPERTY OF  
DIVERSIFIED WOOD CRAFTS. IT MAY NOT  
BE ALTERED OR CHANGED WITHOUT  
PERMISSION

DRAWING NUMBER:

LW-8

SCALE:

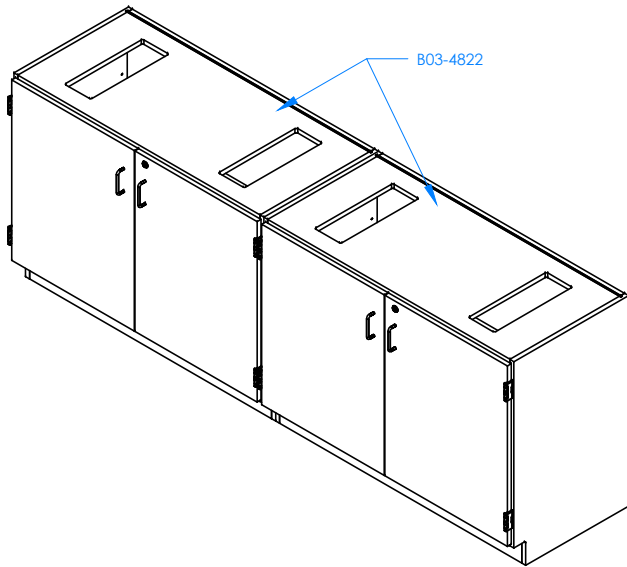
NTS

SHEET:

2 OF 5

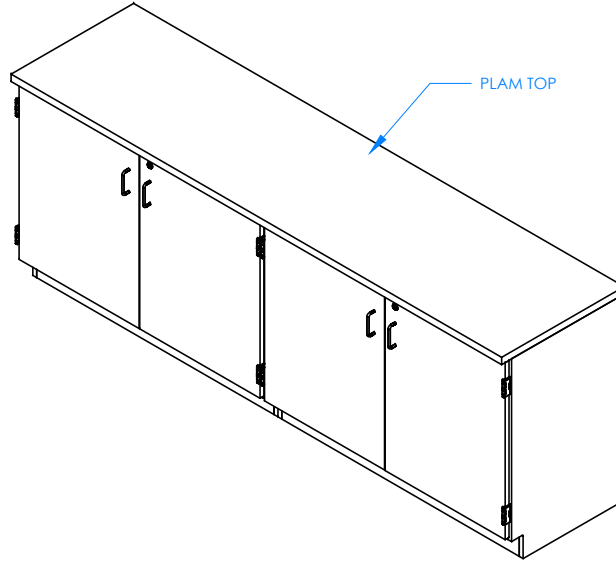
REVISION:

REV A



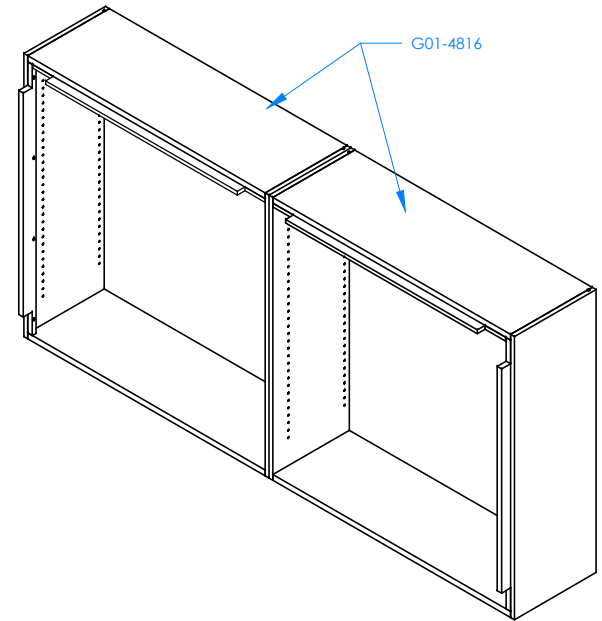
## STEP 1:

POSITION THE BASE CABINETS IN YOUR DESIRED LOCATION. LEVEL CABINETS. ANCHOR CABINETS TO EACH OTHER. CABINETS MUST BE LEVELED OR DOORS MAY NOT OPEN OR CLOSE CORRECTLY. ANCHOR CABINETS TO THE WALL.



## STEP 2:

ATTACH THE TOP TO THE BASE CABINETS WITH THE SCREWS PROVIDED FROM INSIDE THE CABINET. TOP MUST BE FLUSH WITH BACK AND SIDES.



## STEP 3:

ANCHOR THE TWO WALL CABINETS TOGETHER.

## NOTE:

1.

DWN BY:	EMK	DWN DATE:	3/4/14
APR BY:		DATE APR:	
APR BY:		DATE APR:	

UNLESS OTHERWISE SPECIFIED  
DIMENSION ARE IN INCHES  
CABINET SQUARENESS ± .0625  
FRACTIONAL VALUES ± 1/32"  
- ALL VALUES ± OVERALL -

A	DESCRIPTION	DATE	NAME	ECH NO.
REV.				

REVISION LEVEL

THIS DRAWING IS THE SOLE PROPERTY OF  
DIVERSIFIED WOOD CRAFTS. IT MAY NOT  
BE ALTERED OR CHANGED WITHOUT  
PERMISSION



300 South Krueger Street  
Suring, WI 54174  
diversifiedwoodcrafts.com

TITLE:  
LEARNING PLUS WALL  
ASSEMBLY INSTRUCTIONS

DRAWING NUMBER:

LW-8

SCALE:

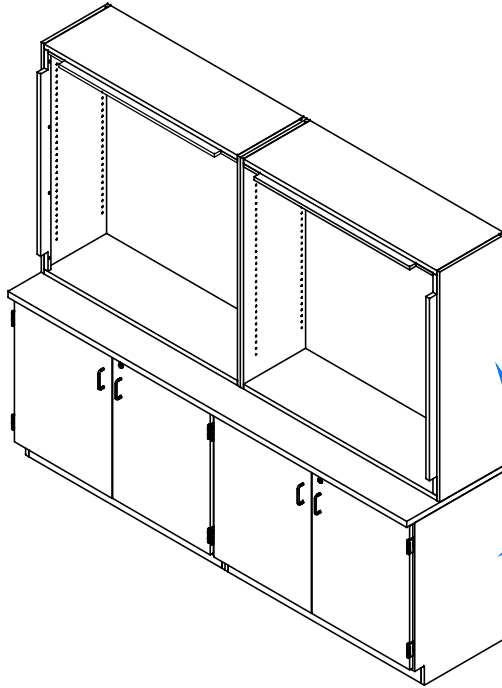
NTS

SHEET:

3 OF 5

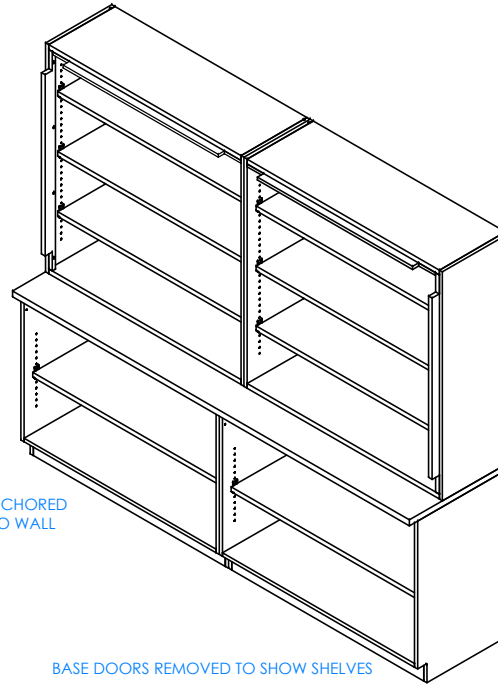
REVISION:

REV A



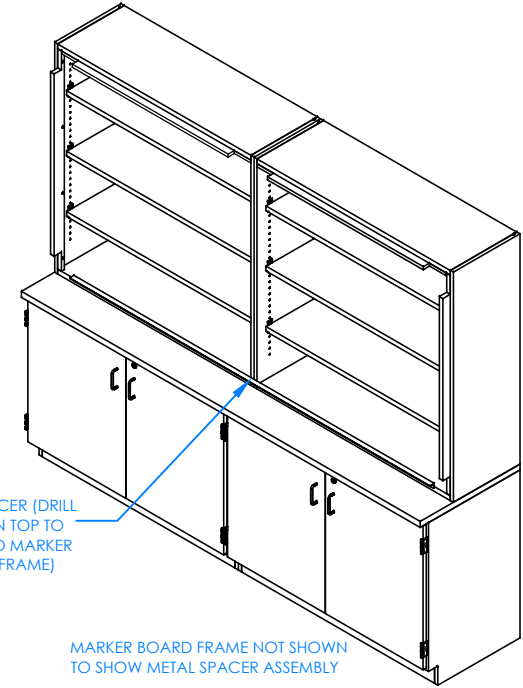
## STEP 4:

POSITION THE WALL CABINETS ON TOP OF THE PLAM TOP, MAKING SURE BACK AND SIDES ARE FLUSH WITH BACK AND SIDES OF BASE CABINET. ONCE IN CORRECT LOCATION, ANCHOR WALL CABINETS TO THE WALL.



## STEP 5:

ADD SHELF PINS AND SHELVES TO THE WALL AND BASE CABINETS.



## STEP 6:

DRILL  $\frac{1}{8}$ " HOLES ON THE TOP OF THE METAL SPACER TO BE ATTACHED TO THE BOTTOM OF THE MARKER BOARD FRAME. ATTACH WITH SCREWS (NOT PROVIDED). ATTACH THE MARKER BOARD FRAME TO THE CLEATS OF THE WALL CABINETS (SIDES AND TOP). DRILL  $\frac{3}{16}$ " HOLES TO THE METAL FRAME OF THE MARKER BOARD INTO THE CLEATS. ATTACH WITH SCREWS (NOT PROVIDED).

## NOTE:

1.

DWN BY:	EMK	DWN DATE:	3/4/14
APR BY:		DATE APR:	
APR BY:		DATE APR:	

UNLESS OTHERWISE SPECIFIED  
DIMENSION ARE IN INCHES  
CABINET SQUARENESS  $\pm .0625$   
FRACTIONAL VALUES  $\pm 1/32"$   
- ALL VALUES  $\pm$  OVERALL -

A	CREATED ASSEMBLY INSTRUCTIONS	3/4/14	EMK	-
REV.	DESCRIPTION	DATE	NAME	ECH NO.

REVISION LEVEL

THIS DRAWING IS THE SOLE PROPERTY OF  
DIVERSIFIED WOOD CRAFTS. IT MAY NOT  
BE ALTERED OR CHANGED WITHOUT  
PERMISSION



300 South Krueger Street  
Suring, WI 54174  
diversifiedwoodcrafts.com

TITLE:  
LEARNING PLUS WALL  
ASSEMBLY INSTRUCTIONS

DRAWING NUMBER:

LW-8

SCALE:

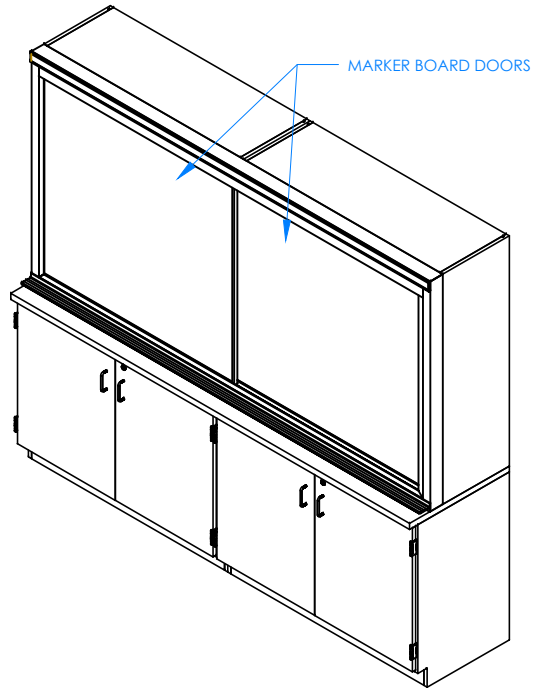
NTS

SHEET:

4 OF 5

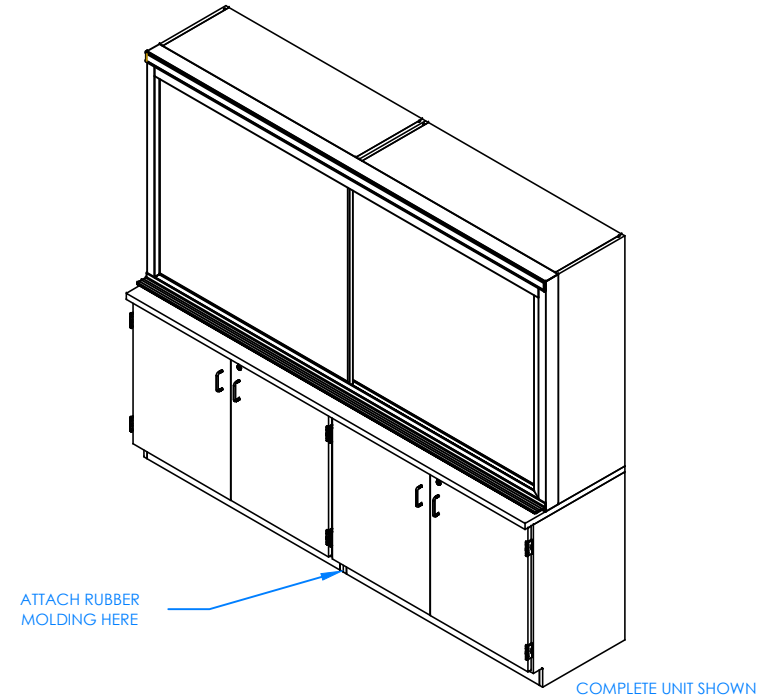
REVISION:

REV A



## STEP 7:

ATTACH MARKER BOARD DOORS TO THE FRAME.



## STEP 8:

ATTACH RUBBER MOLDING USING CONTACT CEMENT. AFTER MOLDING IS IN PLACE, SCREW STAINLESS STEEL CORNER BRACKETS ON EACH CORNER OVER THE BASE MOLDING.

## NOTE:

1.

DWN BY:	EMK	DWN DATE:	3/4/14
APR BY:		DATE APR:	
APR BY:		DATE APR:	

UNLESS OTHERWISE SPECIFIED  
DIMENSION ARE IN INCHES  
CABINET SQUARENESS  $\pm .0625$   
FRACTIONAL VALUES  $\pm 1/32"$   
- ALL VALUES  $\pm$  OVERALL -

THIS DRAWING IS THE SOLE PROPERTY OF  
DIVERSIFIED WOOD CRAFTS. IT MAY NOT  
BE ALTERED OR CHANGED WITHOUT  
PERMISSION



300 South Krueger Street  
Suring, WI 54174  
diversifiedwoodcrafts.com

TITLE:  
LEARNING PLUS WALL  
ASSEMBLY INSTRUCTIONS

A	CREATED ASSEMBLY INSTRUCTIONS	3/4/14	EMK	-
REV.	DESCRIPTION	DATE	NAME	ECH NO.

REVISION LEVEL

DRAWING NUMBER:

LW-8

SCALE:

NTS

SHEET:

5 OF 5

REVISION:

REV A