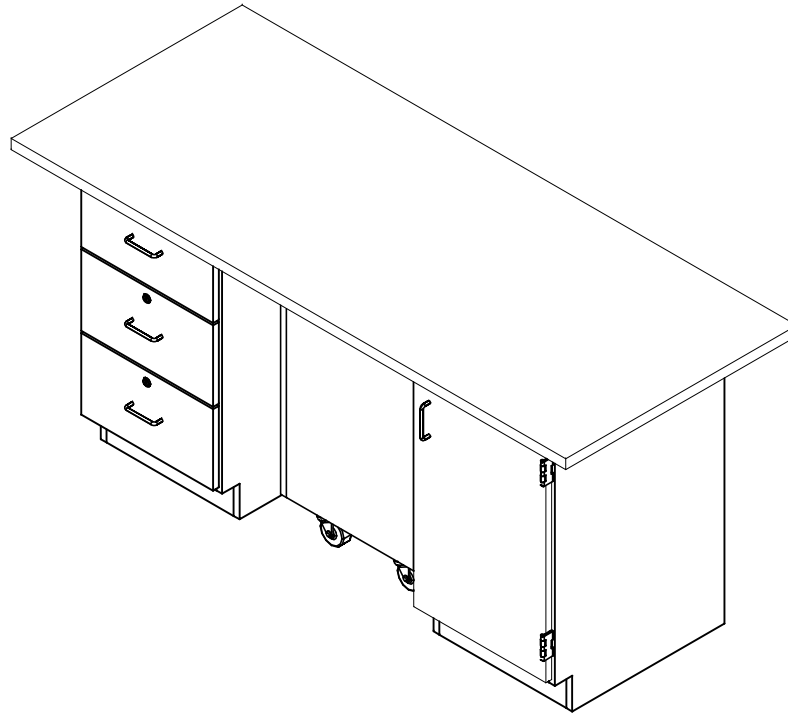


# CERAMIC WORK CENTER

CWC-72P

## ASSEMBLY INSTRUCTIONS



### NOTE:

1. MODEL VIEWS MAY NOT REPRESENT EXACT MODEL PURCHASED

DWN BY:	EMK	DWN DATE:	2/18/14
APR BY:		DATE APR:	
APR BY:		DATE APR:	

UNLESS OTHERWISE SPECIFIED  
DIMENSION ARE IN INCHES  
CABINET SQUARENESS  $\pm .0625$   
FRACTIONAL VALUES  $\pm 1/32"$   
- ALL VALUES  $\pm$  OVERALL -



300 South Krueger Street  
Suring, WI 54174  
diversifiedwoodcrafts.com

TITLE:  
CERAMIC WORK CENTER  
ASSEMBLY INSTRUCTIONS

A	CREATED ASSEMBLY INSTRUCTIONS	2/18/14	EMK	-
REV.	DESCRIPTION	DATE	NAME	ECN NO.

REVISION LEVEL

THIS DRAWING IS THE SOLE PROPERTY OF  
DIVERSIFIED WOOD CRAFTS. IT MAY NOT  
BE ALTERED OR CHANGED WITHOUT  
PERMISSION

DRAWING NUMBER:

CWC-72P

SCALE:

NTS

SHEET:

1 OF 3

REVISION:

REV A

**TOOLS REQUIRED**

SCREW DRIVER
CONTACT CEMENT
C-CLAMPS
SHIM STOCK (IF NEEDED)

**ASSEMBLY COMPONENTS**

ITEMS INCLUDED	PART #	PART DESCRIPTION	QTY
TOP	17-0036	TOP, PLAM, 1.25X30X72, ALMOND	1
CABINET ASSEMBLY	N/A	B33 - 18"W X 22"D X 32.50"H	1
CABINET ASSEMBLY	N/A	B95 - 18"W X 22"D X 32.50"H	1
CABINET ASSEMBLY	N/A	C-38 - CLAY CART	1
SILICONE	100711	SILICONE, SEALANT, CLEAR	1
STAINLESS STEEL CORNERS	100057	CORNERS-STAINLESS STEEL, BASE	8
SCREWS - CORNERS	100064	SCREW, #6X $\frac{1}{2}$ PTH SMS SS SCREW	32
RUBBER MOLDING	100283	RUBBER BASE MOLDING(SOLD BY FOOT)	13.5
SHELF CLIPS	100027	SHELF CLIPS, PLASTIC, 5MM PIN	4

NOTE:

1.

DWN BY:	EMK	DWN DATE:	2/18/14
APR BY:		DATE APR:	
APR BY:		DATE APR:	

UNLESS OTHERWISE SPECIFIED  
DIMENSION ARE IN INCHES  
CABINET SQUARENESS  $\pm .0625$   
FRACTIONAL VALUES  $\pm 1/32"$   
- ALL VALUES  $\pm$  OVERALL -



300 South Krueger Street  
Suring, WI 54174  
diversifiedwoodcrafts.com

TITLE:  
CERAMIC WORK CENTER  
TOOLS AND ASSEMBLY COMPONENTS

A	CREATED ASSEMBLY INSTRUCTIONS	2/18/14	EMK	-
REV.	DESCRIPTION	DATE	NAME	ECN NO.

REVISION LEVEL

THIS DRAWING IS THE SOLE PROPERTY OF  
DIVERSIFIED WOOD CRAFTS. IT MAY NOT  
BE ALTERED OR CHANGED WITHOUT  
PERMISSION

DRAWING NUMBER:

CWC-72P

SCALE:

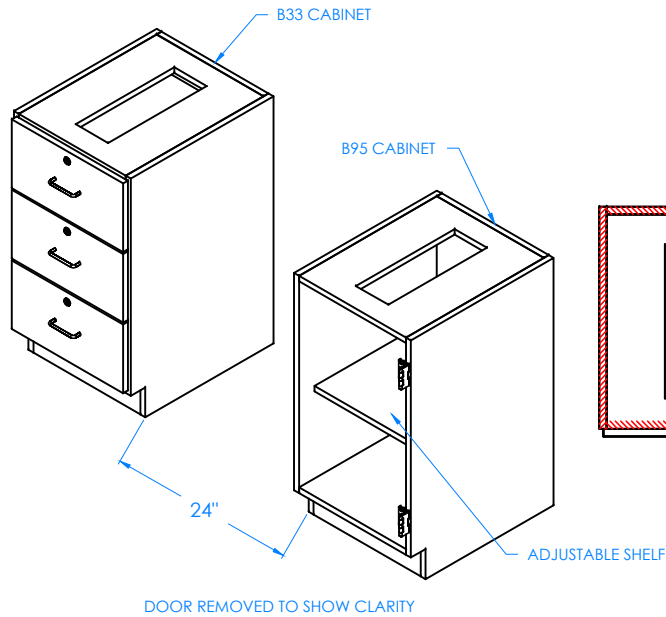
NTS

SHEET:

2 OF 3

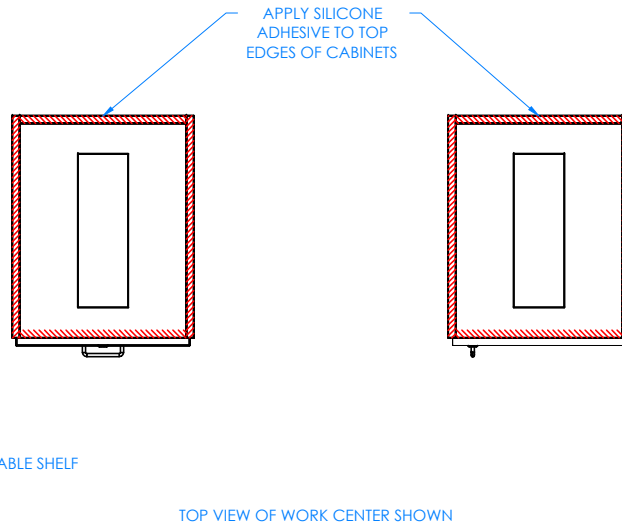
REVISION:

REV A



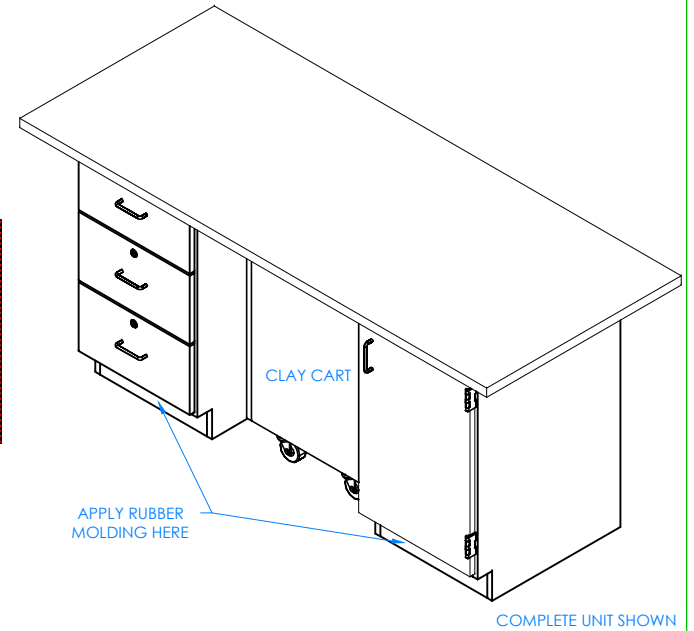
## STEP 1:

POSITION THE CABINETS IN YOUR DESIRED LOCATION. LEAVE ENOUGH ROOM IN BETWEEN CABINETS FOR CLAY CART. LEVEL CABINETS AND ATTACH TO WALL. CABINETS MUST BE LEVELED OR DOORS AND DRAWERS MAY NOT OPEN OR CLOSE CORRECTLY. INSERT SHELF CLIPS IN DESIRED LOCATION. PLACE SHELF ON CLIPS, MAKING SURE IT IS LEVEL.



## STEP 2:

APPLY SILICONE ADHESIVE TO TOP EDGES OF CABINETS. PLACE TOP ON CABINETS WITH PROPER OVERHANG (6" OVERHANG ON SIDES AND 4" ON FRONT AND BACK). CLAMP ON TOP TO CABINET TOPS TO REMOVE ANY WARP USING SHIMS AND C-CLAMPS, IF NEEDED, WHEN ALIGNING THE TOP (DO THIS BEFORE ADHESIVE ON EDGES SETS UP). LET CURE FOR 6-12 HOURS.



## STEP 3:

ATTACH THE RUBBER BASE MOLDING USING CONTACT CEMENT. ONCE MOLDING IS IN PLACE, SCREW STAINLESS STEEL CORNER BRACKETS ON EACH CORNER OVER THE BASE MOLDING. SEE C-38 ASSEMBLY INSTRUCTIONS ON HOW TO ASSEMBLY CLAY CART.

## NOTE:

1.

DWN BY:	EMK	DWN DATE:	2/18/14
APR BY:		DATE APR:	
APR BY:		DATE APR:	

UNLESS OTHERWISE SPECIFIED  
DIMENSION ARE IN INCHES  
CABINET SQUARENESS  $\pm .0625$   
FRACTIONAL VALUES  $\pm 1/32"$   
- ALL VALUES  $\pm$  OVERALL -

REV.	DESCRIPTION	DATE	NAME	ECH NO.
A	CREATED ASSEMBLY INSTRUCTIONS	2/18/14	EMK	-
REVISION LEVEL				

THIS DRAWING IS THE SOLE PROPERTY OF  
DIVERSIFIED WOOD CRAFTS. IT MAY NOT  
BE ALTERED OR CHANGED WITHOUT  
PERMISSION



300 South Krueger Street  
Suring, WI 54174  
diversifiedwoodcrafts.com

TITLE:  
CERAMIC WORK CENTER  
ASSEMBLY INSTRUCTIONS

DRAWING NUMBER:

CWC-72P

SCALE:

NTS

SHEET:

3 OF 3

REVISION:

REV A